

YOUR FLEET IN FOCUS

Trinsight® is a cloud-based platform purpose-built to deliver real-time visibility and rail-time efficiency. Trinsight allows you to transform and streamline your supply chain with the real-time tracking, analysis, and management features that modern logistics demands. The result: Your freight is protected, your fleet is optimized, and your working capital is maximized.



SHIPMENT MANAGEMENT

YARD MANAGEMENT



DASHBOARDS + DATAVERSE

HOW TRINSIGHT WORKS

The platform utilizes secure, cloud-based GPS technology to track the exact location of railcars, in real time, from origin to destination.

It can document shipment status and activities that impact cost, and can be used to simulate your supply chain to model opportunities for optimization.

Acting as a digital twin for the North American rail network, it analyzes thousands of sensor messages per second and converts this data into actionable insights delivered via a user-friendly, completely configurable dashboard.

CLM, WAYBILL, & GPS DATA INTEGRATION	REAL-TIME SHIPMENT SECURITY	DWELL TIME BY THE MINUTE
--------------------------------------	-----------------------------	--------------------------

BENEFITS OF TRINSIGHT

RAIL LOGISTICS IMPROVEMENT BY MEASUREMENT

SHIPMENT VISIBILITY

Increase Productivity & Reduce Administration

- Consolidated Data in a Digital Dashboard
- On-Demand and Scheduled Reports
- Private, Customer, Supplier, and System Subfleet Railcar Visibility

ASSET UTILIZATION

Reduce Asset Downtime

- Monitor Empty vs. Loaded Railcar Status
- GPS and CLM Mileage Reporting
- Dwell and Delay Reporting

LOGISTICS OPTIMIZATION

Track, Measure, & Improve

- Disruption Highlights and Notifications
- Customized Reporting Automation
- Cycle Time and Shipment Status Analytics

SAFETY & COMPLIANCE

Secure Digital Chain of Custody

- GPS and Telematics Data Reporting on Cargo Status and Railcar Health
- Compliance for Location of TIH and Hazardous Shipments

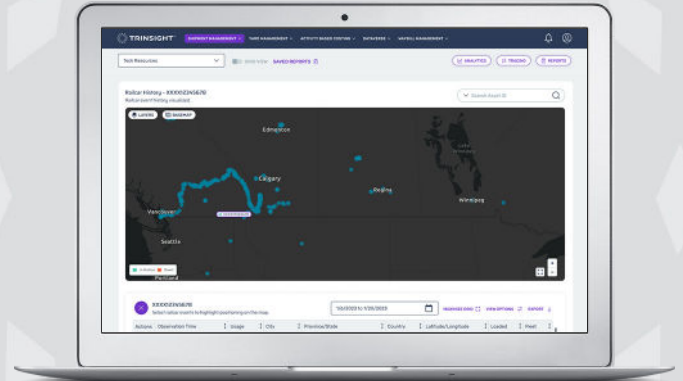
THE FUTURE OF FLEET LOGISTICS AND INTELLIGENCE

SHIPMENT MANAGEMENT

Real-Time Tracking of Railcars to Within 15 Feet Anywhere in North America, With Location and Status Notifications Within 10 Minutes

Shipment Management is a robust software application that takes rail asset visibility to the next level. Trinsight’s ability to deliver a mixture of intelligent hardware solutions, integration methods, and software features creates the perfect solution for each type of railcar.

- GPS, CLM and waybill data in a single sortable, filterable, and customizable view
- Route history with exportable, sortable and filterable grid view
- More than 70 data connections, including data from yards, shippers, class 1s, AEI readers, emails, and PDFs

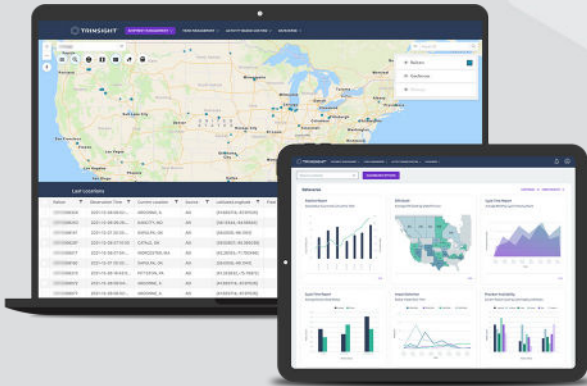


YARD MANAGEMENT

Monitor Railcars Within Any Type of Railyard From the Time They Enter Until the Time They Depart

Yard Management automatically captures the inbound asset lineup in sequence so that the yard operator gets visibility to the inbound asset. Update inventory position either by integrating with terminal operating systems or using the Trinsight Yard Management user interface.

- Monitor arrival, inspection, cleaning, repair, loading, billing, and departure status changes
- Analyze yard operational efficiency, yard cycle times, and bottlenecks
- Automated calculation of demurrage, switching fees, cleaning fees, and more

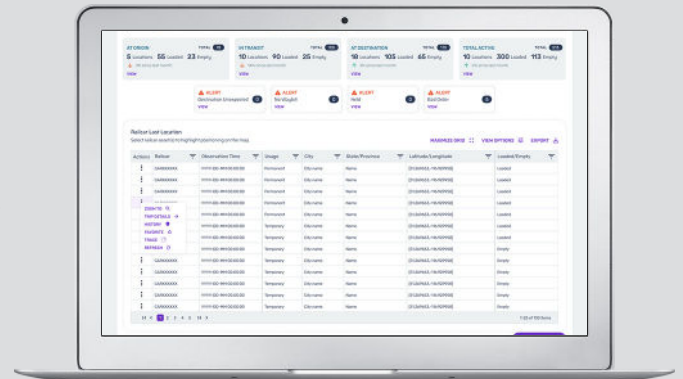


DASHBOARD & DATAVERSE

Quickly and Easily Visualize Last Location, Dwell by Location, Cycle Time, and Network Performance Analysis

These custom reports are visual, real-time, and historical and can be set to run daily, weekly, or on other intervals. Users can easily filter, change, research, and investigate all data based on specific operational activities.

- Velocity reporting by cycle
- Dwell reporting
- Waybill explorer
- Shipments reporting by railroad
- Delayed-cars reporting
- Inbound pipeline visualization



If Your Business Relies on Rail, You Can Rely on Trinsight.

Ready to see more, save more, and ship more? Contact us to schedule a demo.
Trinsight.Sales@trin.net | 214-631-4420